



## MSC-Mega Scraper Conversion

SPECIALTY HAULAGE SOLUTIONS FOR CONSTRUCTION & MINING



Application for

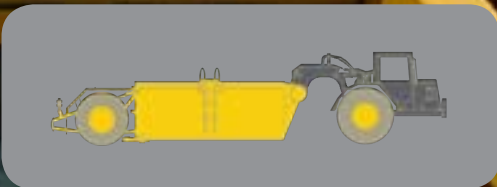
**CAT®**  
Converting scrapers to water pulls



### CATERPILLAR®

MEGA MODEL	TANK SIZE	TRUCK CONFIGURATION
MSC5	5k gal	613
MSC6.5	6.5k gal	615
MSC8	8k gal	621
MSC8	8k gal	623
MSC8	8k gal	627
MSC10	10k gal	631
MSC10	10k gal	633
MSC10	10k gal	637
MSC12	12k gal	651
MSC12	12k gal	657

The MSC model does not include tractor & is available in both rigid neck and drop tank configuration.



**MEGA CORP.®**

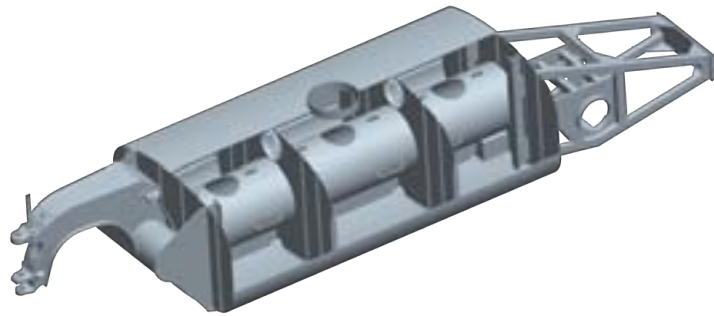
700 Osuna Rd. N.E. • Albuquerque, NM 87113 • 1-800-345-8889 • 505-345-2661 • Fax 505-345-6190  
www.megacorpinc.com

## STANDARD FEATURES

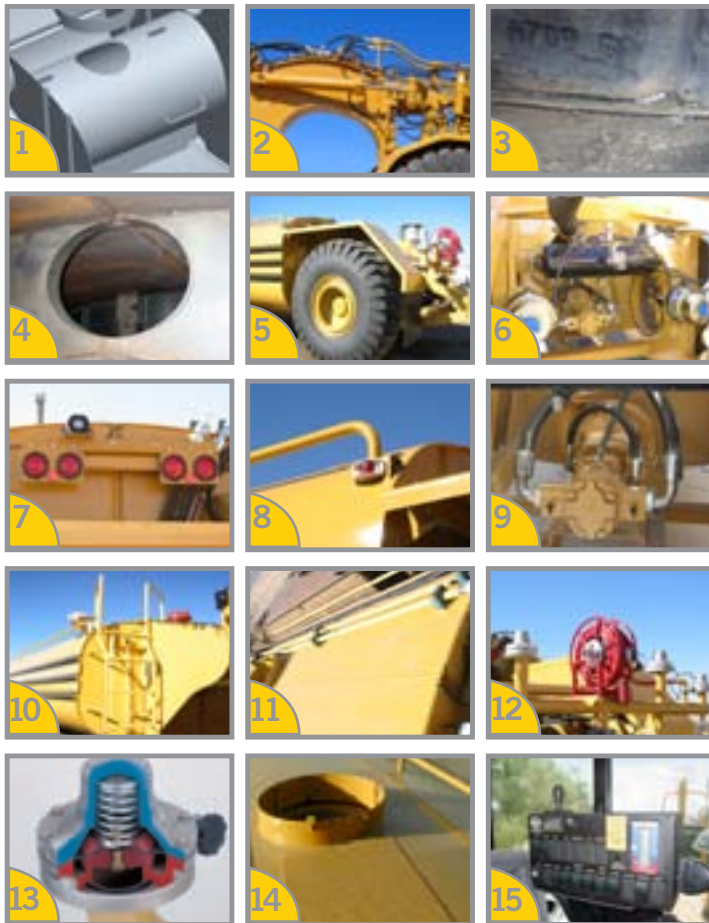
- 1 Mega Anti-Surge Stabilization M.A.S.T
- 2 Heavy Duty Gooseneck
- 3 Full Welds Throughout Entire Structure
- 4 Banded Manholes
- 5 Mega Bogie With Cat Axles
- 6 Cat Braking System
- 7 Stop, Brake, Tail Lights
- 8 Clearance Lights
- 9 Close-Coupled Water Pump/Hydraulic Motor
- 10 Safety Ladder
- 11 Externally Routed Hydraulic Lines to Eliminate Cross-Contamination
- 12 Rear Spray Bar With 2 or 4 Spray Heads
- 13 Patented Spray Heads With 360 Degree Rotation & Variable Opening Adjustment
- 14 Anti-Skid Perforated Metal Walkway With a Variety of Banded Access Port Configurations
- 15 Electronic Cab Control Module

## OPTIONAL FEATURES

- 1 Stainless Steel Hydraulic or Electric Monitor
- 2 Variety of Nozzles Including Remote Control & Foam Eduction
- 3 Anti-Siphon Fill
- 4 Manual & Powered Hose Reels With Various Sizes
- 5 Front Bumper Spray
- 6 Vertical Side Spray
- 7 Swivel Spray Head
- 8 Powered or Gravity Dump Bar
- 9 Drop Tank Configuration
- 10 Tank Protection Plate
- 11 Moldboard and Grader Blade
- 12 Stainless Steel Piping & Water Pump
- 13 Suction Loading Pump (Limited Applications)
- 14 Epoxy Coated Interior
- 15 In-Cab Water Level Indicator



## STANDARD FEATURES



## OPTIONAL FEATURES

